



# Citilink 2030 Transit Development Plan

IN THIS ISSUE

## Overview of the 2030 Transit Development Plan

Every five to ten years, Citilink completes a process of updating the Transit Development Plan (TDP). The purpose of the plan is to assess the state of the current system, review where future development is expected to occur, and identify service changes to enhance the choices people have in getting to/from work, school, shopping, medical appointments or simply visiting family and friends.

Between now and 2040, there is the expectation population will increase by 67,800 people and 41,000 new jobs will be added to Allen County. For transit to be a viable option to support growth, coordinated efforts between where new development is located, and current service areas is critical. One of the primary purposes of the TDP is to provide a forum for these coordination discussions.

The process of conducting the Transit Development Plan Update is divided into four primary steps:

- Evaluate Current Service – Which includes both the fixed route services and paratransit (Access). The product of this step will be a description of how well the system performs relative to other similar systems and industry guidelines.
- Assessment of Current Services to Meet Local Needs – Through surveys and review of where routes run relative to customers needs, a picture of how well needs are being supported will be developed.
- Service Plan Alternatives – Where change is needed, the plan development process will investigate alternatives, including new/expanded service and revision of current.

### Overview of the TDP

What is included in the Transit Development Plan?

What are the Steps to Update the Plan?

### Opportunities for Input

Where and when will more information be available and how can you provide input?

### Schedule



- Develop a Plan – The final product of the process will be a detailed plan of where changes are needed and what changes make sense and are supported by the community.



# Opportunities For Input

The Citilink 2030 plan update will provide customers, community leaders/advocates, and people interested in participating in the process a range of means and times over the update to:

- Gather information about transit in the region.
  - Provide input on your perception of current or possible new service ideas.
- Participate in public discussions regarding transit.

Over the course of the plan update, Citilink will host three rounds of public information meetings, which will be advertised in advance and held in convenient locations at various times of the day.

Meetings will be advertised through Citilink and NIRCC.

## CITILINK 2030 2018 Rider Survey

This is a voluntary survey. If you agree to take the survey, please answer all the questions and return the form today to the surveyor or to the bus driver on your next trip. If you would like to be entered into a drawing for one of four \$25 gift cards or one of four 31-day passes, please provide your contact information in the box at the end.

Translation Services available from LANGUAGE SERVICES NETWORK (LSN)  
Traducción de Documentos y Servicios de Interpretación Personal Bilingüe Calificado  
347 West Berry Street, Fort Wayne, IN 46802; 260-426-6764 ext. 40

The following questions are about the trip you are making now. Example of a trip:



### Thanks for your help!

**1. Where are you coming from?**

Medical Appointment/Hospital Visit  
 Home  
 Work  
 College or University  
 School (K-12)  
 Personal/Social/Recreational Visit  
 Shopping  
 Other

**2. What is the address OR cross streets of the place you are coming from?**

Address \_\_\_\_\_

Direction (N, S, E, W) \_\_\_\_\_

**OR**

Cross Street 1 \_\_\_\_\_ Cross Street 2 \_\_\_\_\_

Zip Code \_\_\_\_\_ Name of Place/Landmark \_\_\_\_\_

**3. How did you not to the bus stop to board the bus?**

**7. Where are you coming from?**

Medical Appointment/Hospital Visit  
 Home  
 Work  
 College or University  
 School (K-12)  
 Personal/Social/Recreational Visit  
 Shopping  
 Other

**8. What is the address OR cross streets of the place you are coming from?**

Address \_\_\_\_\_

Direction (N, S, E, W) \_\_\_\_\_

**OR**

Cross Street 1 \_\_\_\_\_ Cross Street 2 \_\_\_\_\_

Zip Code \_\_\_\_\_ Name of Place/Landmark \_\_\_\_\_

**9. Where will you get off the bus?**

Cross Street 1 \_\_\_\_\_ Cross Street 2 \_\_\_\_\_

Name of Place/Landmark \_\_\_\_\_

**10. How will you get to your final destination after you get off the bus?**

Walk/Wheelchair/Other Device  
 Bicycle  
 Drive  
 Ride with someone else who parked near the bus stop  
 Pick up by someone/Uber/taxi/rideshare

**11. How many working vehicles (cars, trucks, and motorcycles) are available in your household?**

0     1     2     3 or more

**12. Could you have used one of these vehicles to make THIS TRIP today?**

Yes     No

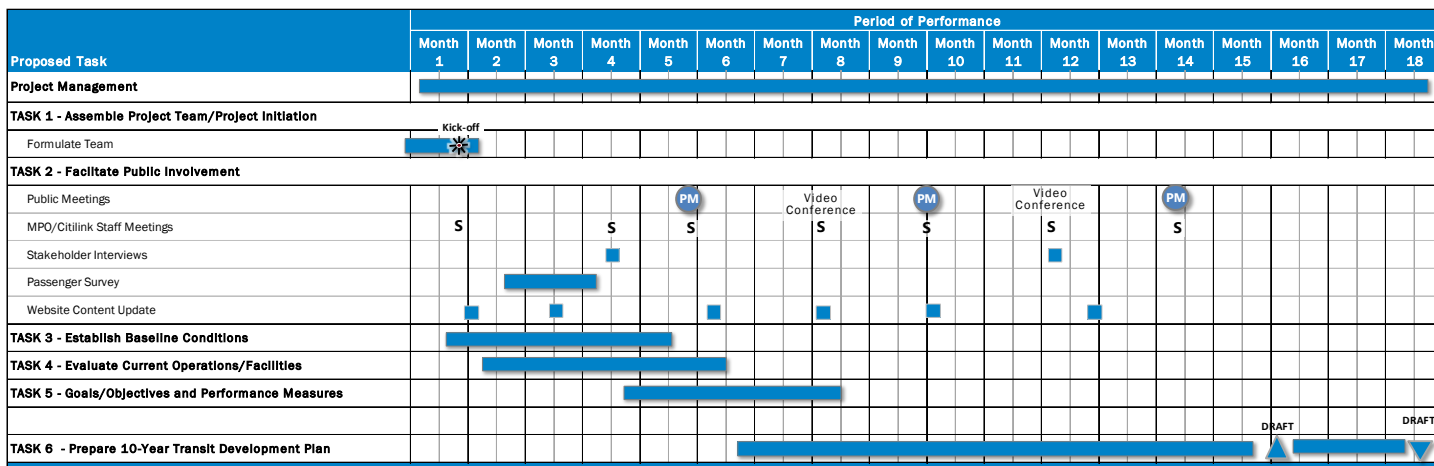
**13. Including yourself, how many people live in your household?**

0     1     2     3     4     5 or more



# Schedule

The TDP update was initiated in February and will take about 18 months to finalize.



For more information, please contact:

Betsy Kachmar, Asst. General Manager  
Citilink  
260-432-4977  
bek@fwcitilink.com

Matt Vondran, Grant Administrator  
NIRCC  
260-449-7309  
matt.vondran@co.allen.in.us

Bill Troe  
SRF Consulting Group  
402-513-2158  
btroe@srfconsulting.com